

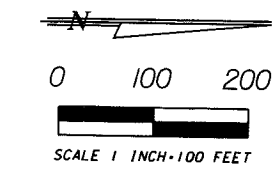
# PALM BEACH INTERNATIONAL EQUESTRIAN CENTER

BEING A REPLAT OF A PORTION OF PARCEL "A", PALM BEACH POLO EQUESTRIAN CLUB PLAT NO. 2 OF WELLINGTON COUNTRYPLACE-P.U.D., ACCORDING TO THE PLAT THEREOF AS RECORDED IN PLAT BOOK 61, PAGE 112, PUBLIC RECORDS OF PALM BEACH COUNTY, FLORIDA AND A PORTION OF TRACT 1, REPLAT OF TRACT C OF PALM BEACH POLO EQUESTRIAN CLUB PLAT NO. 3 OF WELLINGTON COUNTRYPLACE-P.U.D., ACCORDING TO THE PLAT THEREOF AS RECORDED IN PLAT BOOK 68, PAGE 156, PUBLIC RECORDS OF PALM BEACH COUNTY, FLORIDA AND A PORTION OF PALM BEACH POLO EQUESTRIAN CLUB PLAT NO. 3 OF WELLINGTON COUNTRYPLACE-P.U.D. ACCORDING TO THE PLAT THEREOF AS RECORDED IN PLAT BOOK 66, PAGE 98, PUBLIC RECORDS OF PALM BEACH COUNTY, FLORIDA, AND A PORTION OF WATER MANAGEMENT TRACT C, EQUESTRIAN CLUB ESTATES-PLAT NO. 3 OF PALM BEACH POLO AND COUNTRY CLUB WELLINGTON COUNTRYPLACE-P.U.D. ACCORDING TO THE PLAT THEREOF AS RECORDED IN PLAT BOOK 64, PAGE 193, PUBLIC RECORDS OF PALM BEACH COUNTY, FLORIDA.

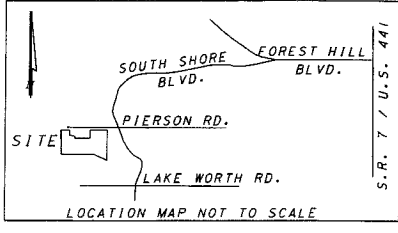
SECTION 20, TOWNSHIP 44 SOUTH, RANGE 41 EAST CITY OF WELLINGTON, PALM BEACH COUNTY, FLORIDA

NOVEMBER 2011

SHEET 4 OF 4

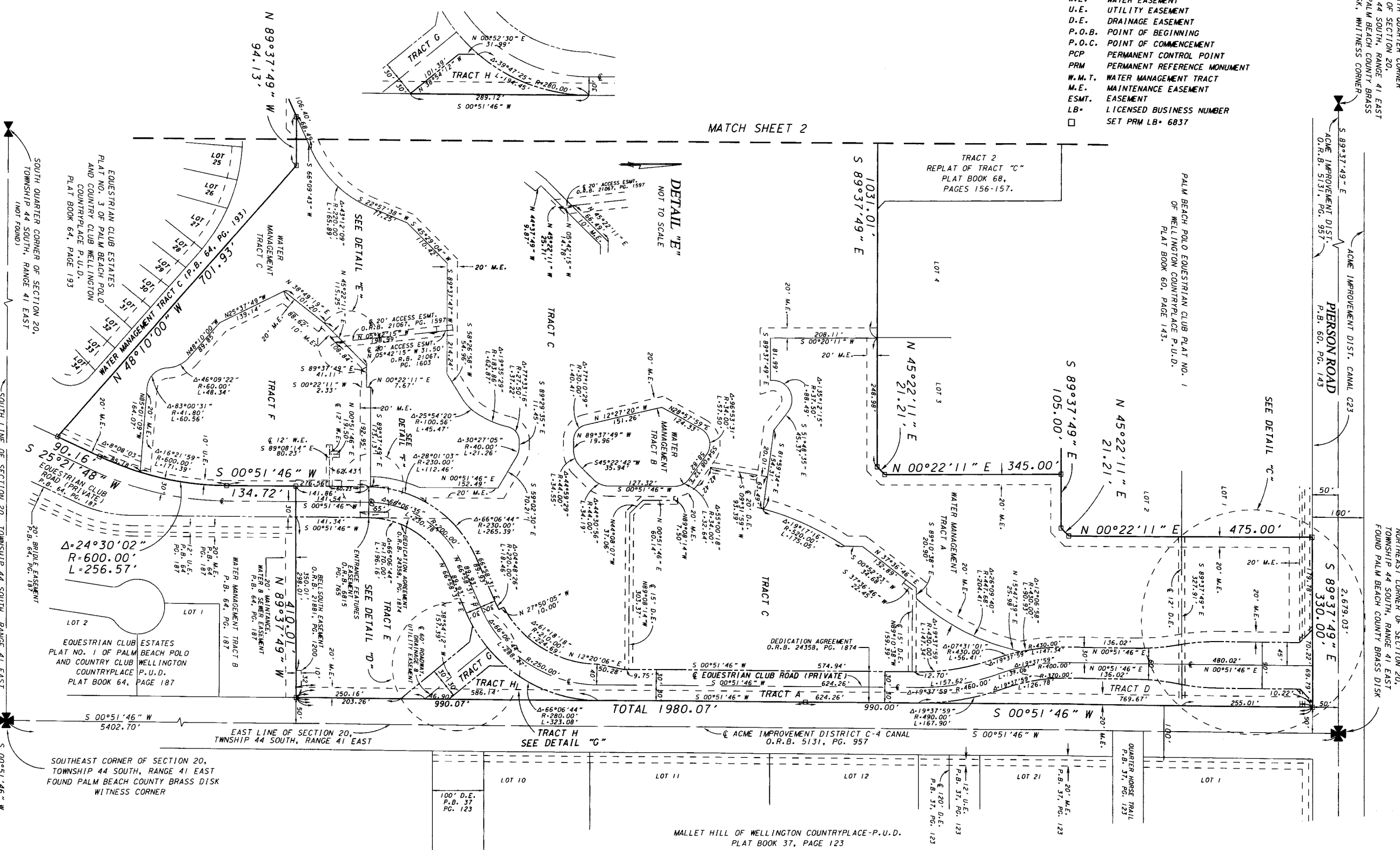
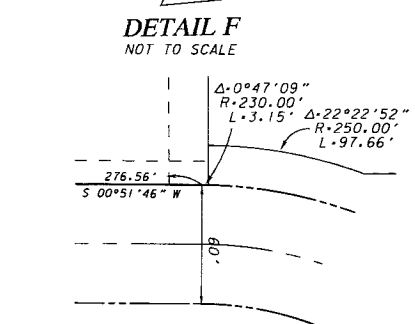
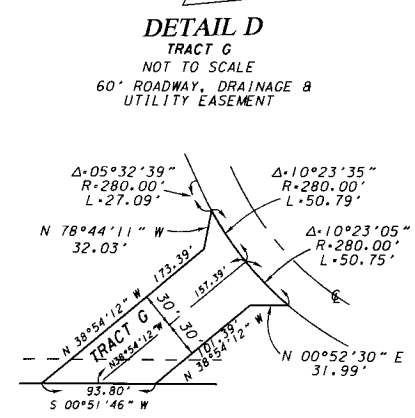
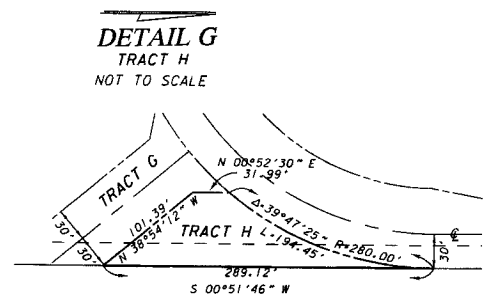
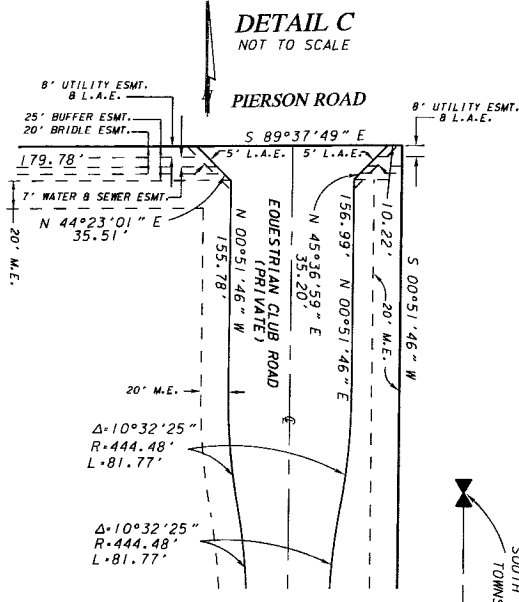


187



**LEGEND & ABBREVIATIONS:**

|        |                              |
|--------|------------------------------|
| R      | RADIUS LENGTH                |
| Δ      | DELTA ANGLE                  |
| L      | ARC LENGTH                   |
| C      | CENTER LINE                  |
| P.B.   | PLAT BOOK                    |
| PG.    | PAGE                         |
| IR     | IRON ROD                     |
| N/D    | NAIL & DISK                  |
| ESMT.  | EASEMENT                     |
| ORB    | OFFICIAL RECORD BOOK         |
| EXIST  | EXISTING                     |
| FND.   | FOUND                        |
| IR/C   | IRON ROD & CAP               |
| FPL    | FLORIDA POWER & LIGHT        |
| B.E.   | BUFFER EASEMENT              |
| W.E.   | WATER EASEMENT               |
| U.E.   | UTILITY EASEMENT             |
| D.E.   | DRAINAGE EASEMENT            |
| P.O.B. | POINT OF BEGINNING           |
| P.O.C. | POINT OF COMMENCEMENT        |
| PCP    | PERMANENT CONTROL POINT      |
| PRM    | PERMANENT REFERENCE MONUMENT |
| W.M.T. | WATER MANAGEMENT TRACT       |
| M.E.   | MAINTENANCE EASEMENT         |
| ESMT.  | EASEMENT                     |
| LB#    | LICENSED BUSINESS NUMBER     |
| □      | SET PRM LB# 6837             |



**SEXTON ENGINEERING ASSOCIATES, INC.**  
CONSULTING ENGINEERS AND SURVEYORS  
110 PONCE DE LEON STREET, SUITE 100  
ROYAL PALM BEACH, FLORIDA, 33411  
PHONE 561-792-3122, FAX 561-792-3168  
FL REGISTRATIONS: LB0006837, EB 0007864

NORTH QUARTER CORNER OF SECTION 20, TOWNSHIP 44 SOUTH, RANGE 41 EAST FOUND PALM BEACH COUNTY BRASS DISK, WITNESS CORNER  
 ACME IMPROVEMENT DIST. CANAL C23  
 PIERSON ROAD P.B. 60, PG. 143  
 ACME IMPROVEMENT DIST. C-4 CANAL O.R.B. 5131, PG. 957  
 NORTH EAST CORNER OF SECTION 20, TOWNSHIP 44 SOUTH, RANGE 41 EAST FOUND PALM BEACH COUNTY BRASS DISK